



## Rother District Crime & ASB Overview Time Period: 2021

<b>Requested by</b>	Insp Olivia Carroll
<b>Author(s)</b>	Keri Summers Neighbourhood Intelligence Analyst
<b>Department</b>	East Sussex Neighbourhood Support Team
<b>Reference</b>	47N-2022-006390
<b>Date</b>	21 <sup>st</sup> February 2022
<b>Version</b>	1.0

### Scope Note

Basic overview of crime and ASB levels in Rother district for 2021.

### Analysis

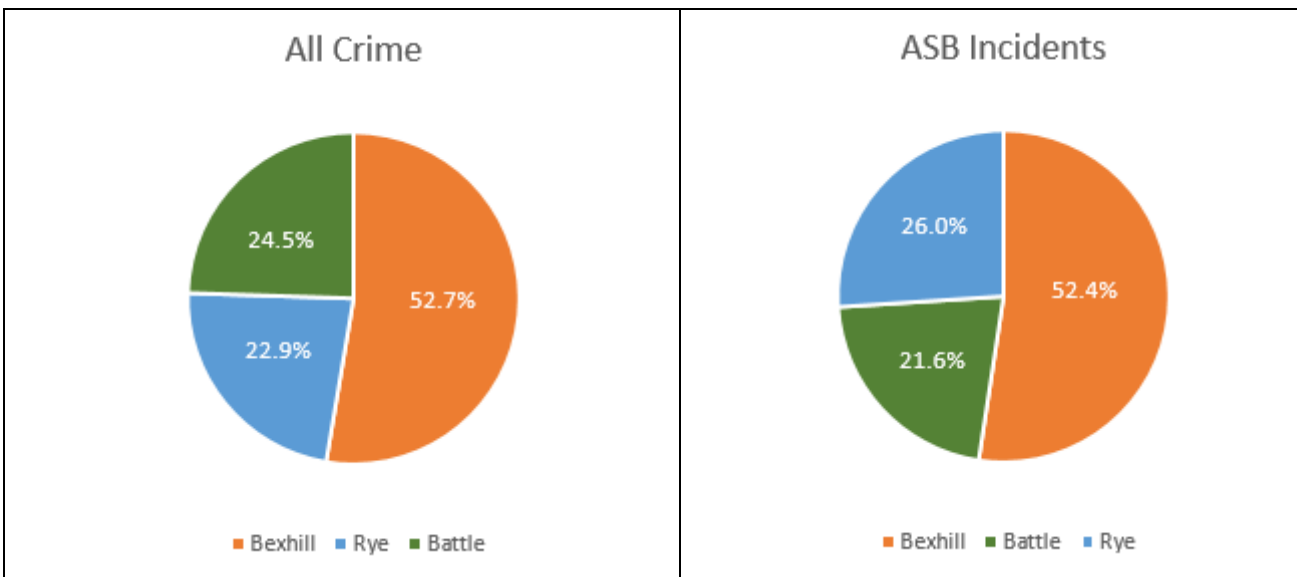
The table below shows that overall crime has reduced by nearly 9% across the district when compared with 2020 which was a similar reduction comparing 2020 with 2019 (-10%). Anti-social behaviour incidents have also reduced after a sharp increase in 2020.

Crime Type	Rolling Year to 31/12/21	Previous Rolling Year	Difference	% Change
Burglary	180	422	-242	-57.3%
Arson/Criminal Damage	688	708	-20	-2.8%
Drug Offences	154	161	-7	-4.3%
Possession of Weapon	50	66	-16	-24.2%
Public Order	561	541	+20	+3.7%
Robbery	21	18	+3	+16.7%
Sexual Offences	181	228	-47	-20.6%
Theft	604	774	-170	-22.0%
Vehicle Offences	283	307	-24	-7.8%
Violence against the Person	2059	2012	+47	+2.3%
Other crimes	131	140	-9	-6.4%
<b>All Crime</b>	<b>4912</b>	<b>5377</b>	<b>-465</b>	<b>-8.6%</b>
Anti-Social Behaviour Incidents	2021	2329	-308	-13.2%

Crimes that increased were public order (includes Sections 1 to 5 riots, violent disorder, affray and causing harassment and miscellaneous crimes against society), robbery and violence against the person. The largest increases in violence against the person offences were malicious communications and assault without injury. Public order increases were in relation to S4/S4a and S5 Public Order Act offences including fear and harassment type offences.

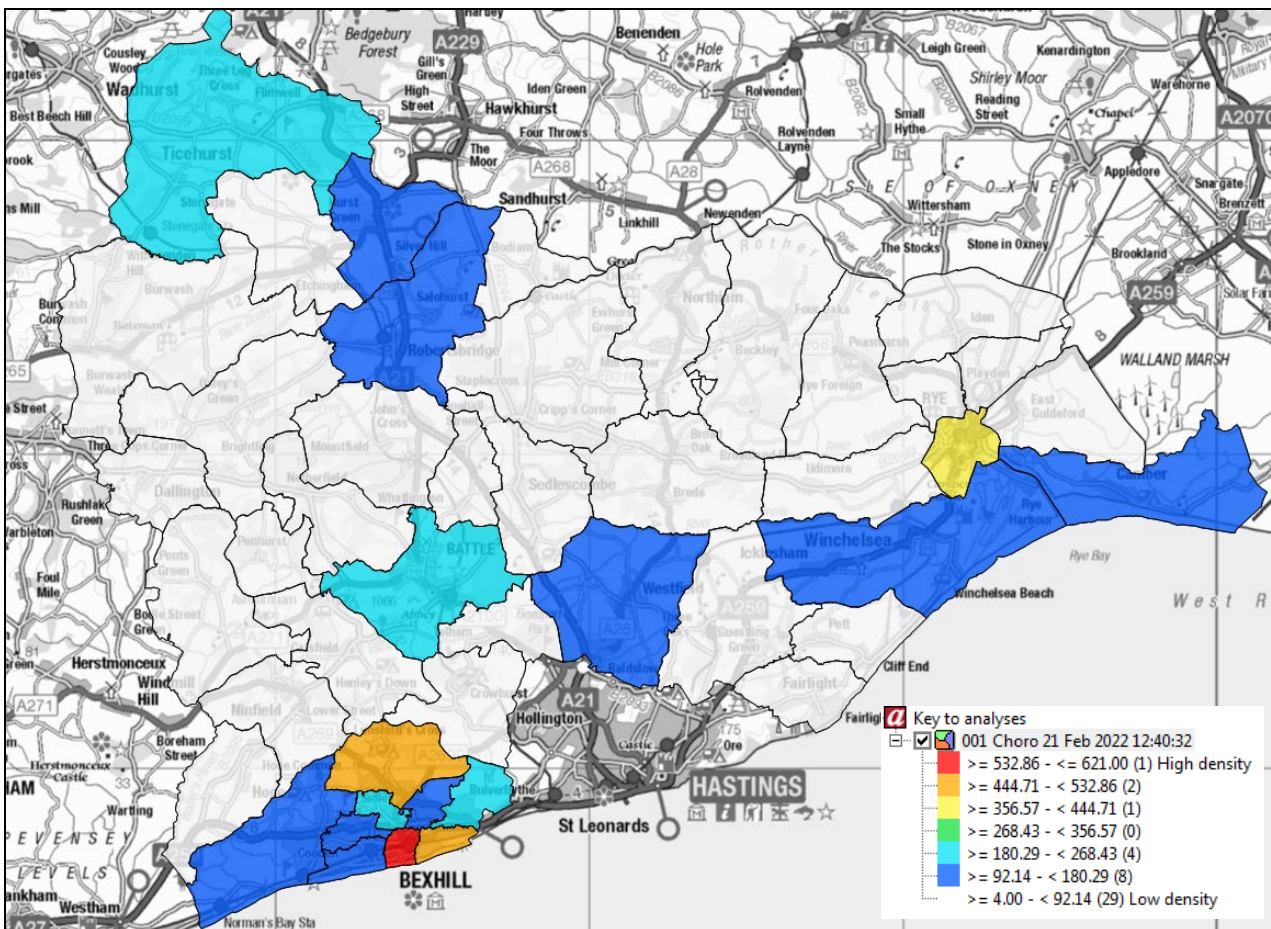
Anti-social behaviour incidents have reduced after the sharp increase in 2020 which was almost certainly due to the pandemic.

Overall Bexhill recorded the most offences. The pie charts below indicates the proportion of offences and incidents for each NPT area in Rother district.

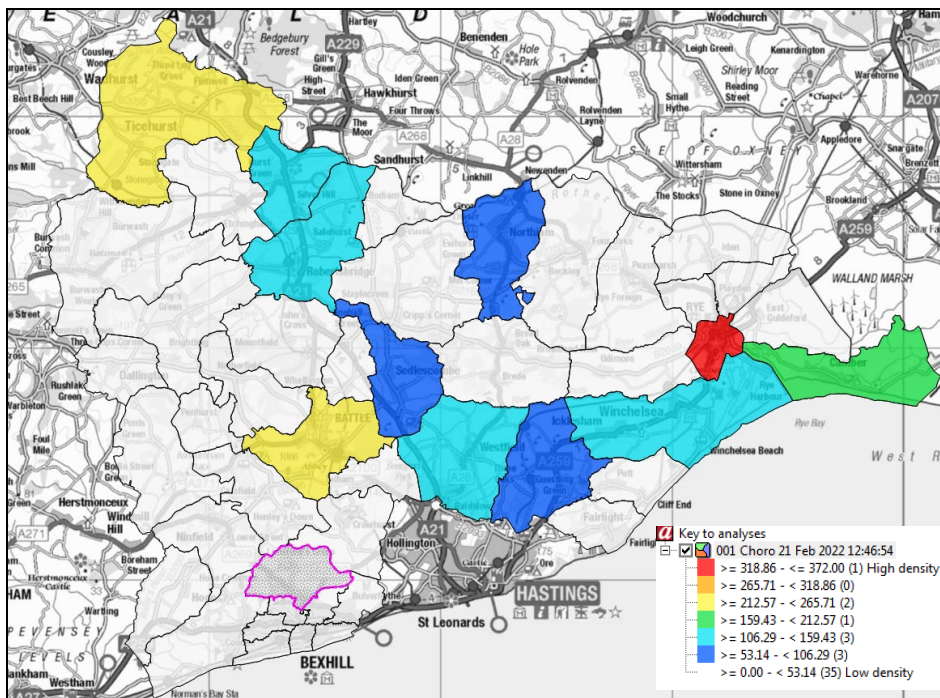


All mapping below of crime and anti-social behaviour incidents have been analysed using choropleth mapping which uses differences in shading within the predefined beat areas to indicate the average values of a particular quantity in those areas

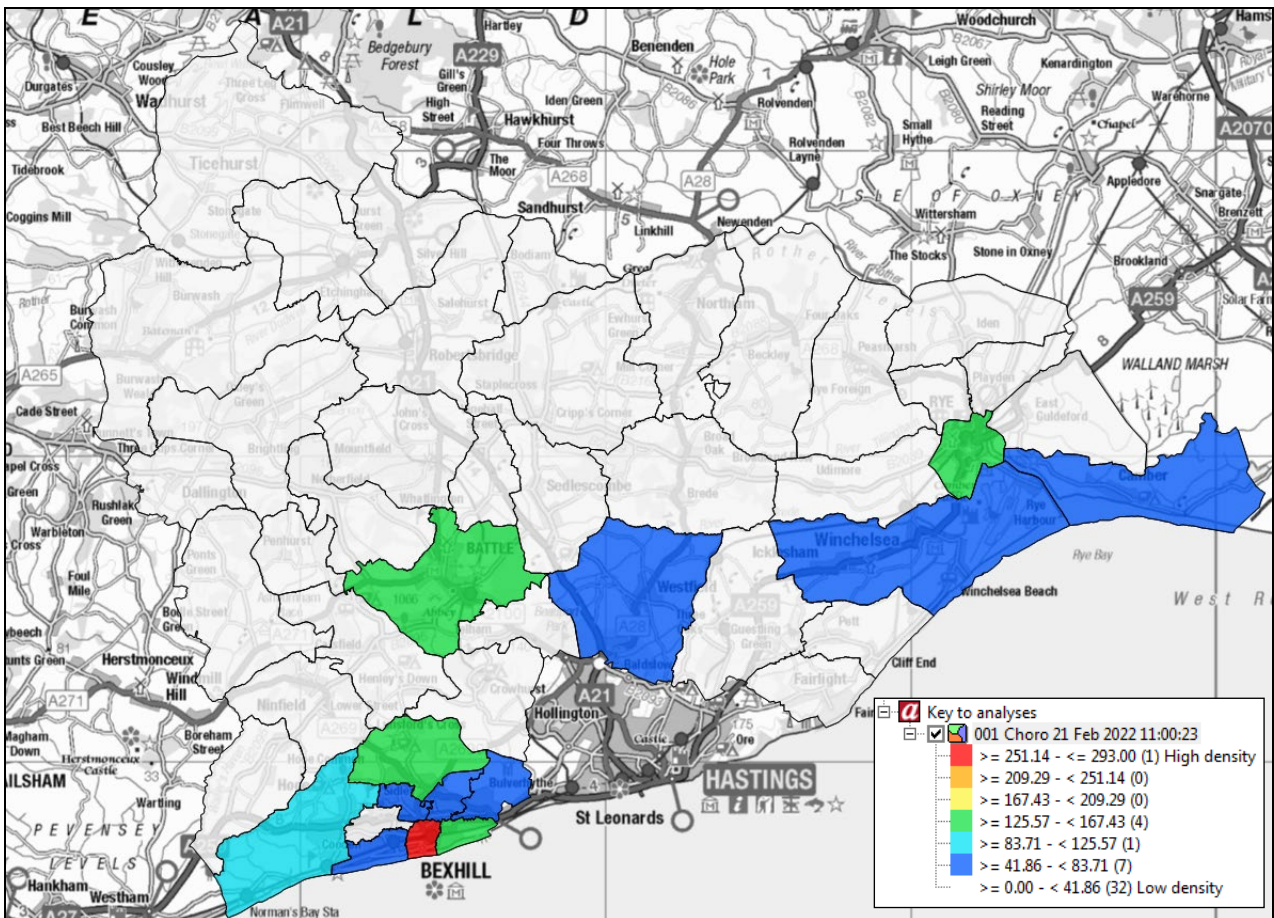
Below is the mapping of all crime across the district for the year 2021. Not surprisingly, Central Bexhill was the hotspot beat area followed by Sackville, Sidley and Rye.



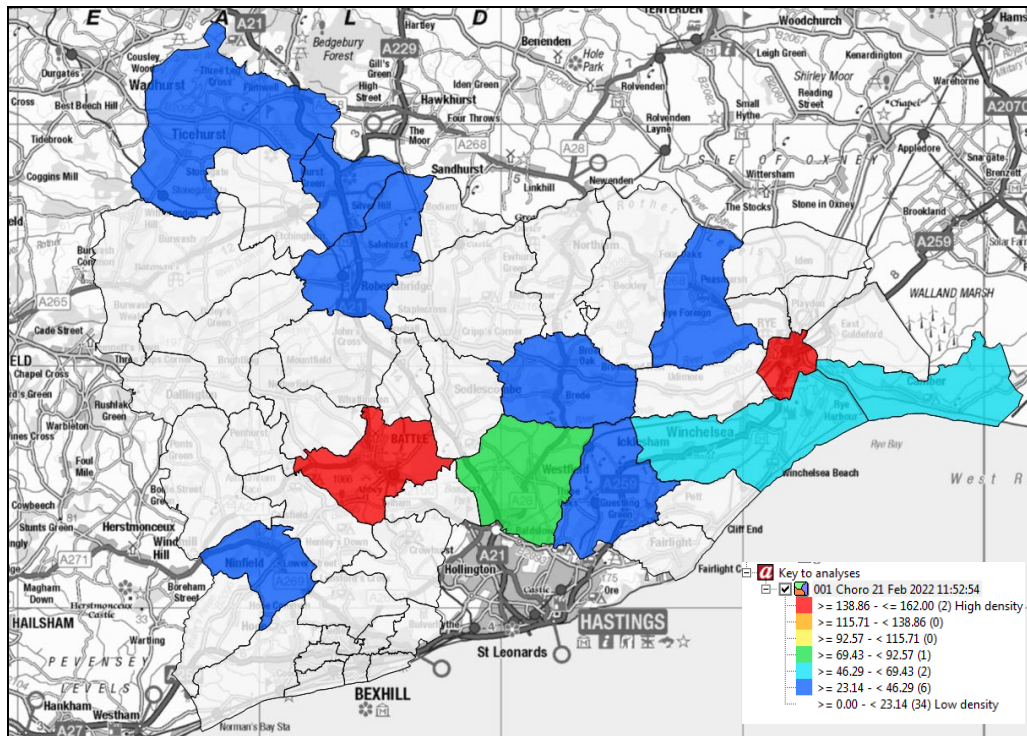
The map below is the same analysis with Bexhill crimes removed indicating a secondary hotspot beat area of Rye followed by Battle, Ticehurst and Camber.



Below is the mapping of all ASB incidents across the district for the year 2021.



The key beat area recording the most offences was Central in Bexhill followed by Sackville. The map below is the same analysis with Bexhill incidents removed indicating that other key areas were Battle, Rye and Westfield.



Below is a key word search across the 12 months which highlights the type of incidents that were reported. Please note that there might be double counting if an incident included more than one of the key words, for example noisy neighbour would be accounted for twice.

Key Word	Count	Key Word	Count
Neighbour	836	Dog	173
Youth/Teen/Child/Kid	682	Drunk/Drink	135
Threat	494	Parking	113
Ongoing (issues)	400	Speed	81
Noise	358	Op Crackdown (ASB driving)	72
Group	354	Abandoned (vehicle)	48
Covid	319	Alarm	48
Drug	310	Traveller	47
Party/Rave	278	Scooter (electric)	40 (8)
Bike/Moped	246	No (Crash) Helmet	30
Cannabis/Weed	202	Sheep Worrying	16